

## Parish and Partners Foreword

Dear All,

**Welcome to the March edition of the Parish and Partners newsletter, although it has only been three months since our last update a lot has happened in this time.**

Firstly, I wanted to thank all of you who attended the inaugural meeting of our Parish Forum which was held on 30 January. We had really good attendance and interaction at this session, I will talk further about Local Government Reorganisation in a bit, however, with the changes which are coming in my opinion the need for such a meeting has never been so apparent. The next Parish Forum is scheduled for 26 June, I do hope to see you all there.

In addition to this initiative and as part of the Council striving to increase our links with Town and Parish Councils, I can now announce that the Council has made an appointment to our Parish Liaison Officer position. The successful candidate will take up their role in the coming weeks, as well as being an experienced officer at the District Council, they are also an existing parish clerk. This range of experiences should be ideal in helping to assist in partnership working.

As you will see within this edition the Council approved its budget at the meeting of Council on 24 February. A number of new initiatives have been funded which are all laid out clearly in the Council Tax booklet which accompanies the new bills, these have also been summarised later in this document.

Thank you to all of you who have taken the time to respond to the recent consultation exercise in relation to the South Warwickshire Local Plan 'Preferred Options' The feedback from our communities on this emerging document will help with the development of the plan.

The main issue however, which has been taking up my time since the 16 December relates to the English Devolution White Paper. This document identifies how government intend to devolve powers from Whitehall to ultimately a series of locally elected mayors who will run 'Strategic Authorities,' which will cover the whole of England. Government has determined that these 'Strategic Authorities,' will be supported by a unitary structure of local government and not the two tier (District and County) arrangements which are currently in place.

Such a move will therefore have huge implications on the structure of local government in our area, Government wish for the new unitary arrangements to be in place by April 2028. Such a move will mean the abolition of the current principal authorities. Stratford-on-Avon District Council along with all the other Districts and Boroughs, and Warwickshire County Council received a formal invitation on 5 February 2025 to propose what these future arrangements may look like.

The Council has until 28 November 2025 to develop its submission under this exercise; however, we have already been required to produce an 'interim plan,' this plan was debated at special meetings of the OSC, Cabinet and Council earlier this week. Full details of [this plan](#) is available on our [website](#).

The interim plans were required to cover 8 specific points, these include initial thoughts on what these future structures may look like along with our plans for engagement with our communities, including our Town and Parish Councils, which will be undertaken before the November deadline.

As far as future structures however, these will concentrate on two options as follows:

- a) **A unitary Council** for the whole county of Warwickshire, population 617k (2023 mid-year estimate). This accords with the statutory guidance that 'As a guiding principle, new councils should aim for a population of 500,000 or more.'
- b) **Two unitary Councils** in Warwickshire, these being made up as follows:
  - One comprising the districts of North Warwickshire, Nuneaton and Bedworth and Rugby (population 323k).
  - The other comprising the Districts of Stratford-on-Avon and Warwick (population 295k).

There will be plenty of opportunities to discuss the implications of such a reorganisation before November and we will also be seeking your opinions as part of the process.

A further update will be provided on how this will happen following the local elections on 1 May 2025. I am also planning a further detailed briefing at the next meeting of the Parish Forum, if there are any specific points that you would like me to cover at this session then please let me know.

Following the formal submission in November 2025, we understand that Government will undertake a consultation exercise in the spring of 2026 on their preferred option for the future of Warwickshire. A final decision on this issue is expected by Government by the Summer of 2026.

During this unsettling period the Council is committed to continue to deliver high quality services. I acknowledge that there will also be some anxiety from our Town and Parish Councils, and I am sure that our new Parish Liaison Officer will be able to help in providing support to some of your queries.

Finally, thank you again for all your support. David



## Council Tax level for Stratford-on-Avon District

**At the end of February, Stratford-on-Avon District Councillors set the district element of the Council Tax at a meeting of the Council.**

The amount residents will be asked to pay for a Band D property is £169.12, an increase of £5. This is an increase of 3.1%, which for an average home represents just an additional 42p per month to the District Council next year.

This means that all the services provided by the District Council cost £3.25 a week for a Band D household. This contributes to meeting the cost of providing a wide range of services including recycling and waste collection, planning, street cleaning, housing, housing benefits, leisure services and children's play areas.

The Council Tax from Stratford-on-Avon District Council for residents for 2025/26 for each of the valuation bands is:

A	£112.75	E	£206.70
B	£131.54	F	£244.28
C	£150.33	G	£281.87
D	£169.12	H	£338.24

Although the District Council acts as the collecting agent for Council Tax, it only receives 7.1% of the Council Tax paid by residents. Warwickshire County Council receives the lion's share of 76.6%, the Police 12.8% and Towns/Parishes 3.5%.

This means the District Council only retains 7.1p of every £1 paid in Council Tax to provide its range of services.



Cllr David Curtis, Portfolio Holder for Resources, said: *"As we review our budget for the coming year, it is essential that we are clear about our goals and the way forward. This budget is not merely about numbers and balances but about our shared vision for the future and the concrete steps we need to take to achieve it."*

*"Over the past five years Stratford-on-Avon District Council has seen its funding from central government decline by 17%, whilst the Council has been subject to 24% inflation over the same period."*

*"The future is uncertain with the local government re-organisation on the horizon and with local authorities expected to cover the additional costs. However, although we must be prudent, through careful financial management we have resources to invest to secure the best future services for our residents."*

*"This budget supports the most vulnerable in our community with initiatives to support victims of domestic abuse, homelessness and the cost-of-living crisis. It introduces new measures to adapt to, and to mitigate the effects of climate change. It works to safeguard services against future financial pressures."*

*"We need to look ahead and work now to invest in the future changes required to maximise public benefit from our resources. We work with our communities, we listen to their priorities, and we act in their interests, these principles are at the heart of this budget!"*



Cllr Susan Juned, Leader of Stratford-on-Avon District Council, said: *"We are an ambitious, fair, inclusive and responsible organisation which puts our communities at the heart of everything we do. Over the next five years our communities and residents will face a range of challenges which we need to address and while some of these are included in our Council Plan, others have emerged."*

*"Funding for local government across the country has been a concern for the past 10 years. Our Rural Services Grant has ceased and other grants also along with a further postponement to the Government's Spending Review. Thankfully, we are not one of the 30 Councils that have asked to be included in claiming for exceptional Financial Support this next year - up from 19 last year. Nevertheless, higher service demands, and higher delivery costs are a challenge."*

*"The uncertainties around the proposed local government re-organisation is a challenge to ensure residents continue to receive high quality services. Making sure we are resilient to further cuts and financial challenges is essential. With this budget we are setting ourselves realistic aims and objectives within areas of focus already outlined in the Council Plan."*



## Council Tax level for Stratford-on-Avon District *continued*

Stratford-on-Avon remains a low-taxing authority, 18th lowest out of 164 district councils across the country in 2024/25.

Council Tax Resolution 2025/26 - Total Band D Council Tax	2024/25	2025/26	% Increase / (decrease)
<b>Stratford-on-Avon District Council</b>	<b>£164.12</b>	<b>£169.12</b>	<b>3.05%</b>
Warwickshire County Council	£1,736.19	£1,822.95	5.00%
Warwickshire Police and Crime Commissioner	£289.71	£303.71	4.83%
<b>Sub-total</b>	<b>£2,190.02</b>	<b>£2,295.78</b>	<b>4.83%</b>
Town and Parish Councils (average)	£73.83	£84.13	13.95%
<b>TOTAL</b>	<b>£2,263.85</b>	<b>£2,379.91</b>	<b>5.13%</b>

Anyone who thinks they could be struggling to pay their Council Tax is encouraged to contact the District Council as soon as possible by calling 01789 260990 or email [revenues@stratford-dc.gov.uk](mailto:revenues@stratford-dc.gov.uk), where the team will be able to advise what help is available.



Town and Parish Councils



Philip Secombe  
Police and Crime  
Commissioner  
for Warwickshire



Following Full Council approval, provision has been made within the 2025/26 budget to fund the following:

- £30,000 for Women's Aid Domestic Violence project support, training, community awareness and work with partners to ensure the availability of their services within the district.
- £50,000 additional funding for the Economic Recovery Reserve to encourage economic activity through one off schemes.
- £50,000 Trees for Parish Councils scheme.
- £50,000 for a Business Conference, to stimulate the local economy, increase networking opportunities, showcase local talent, innovation and promote education and training for local businesses.
- £70,000 to fund the temporary closure of the High Street in Stratford-upon-Avon to assess the feasibility of making such a closure more permanent.
- £80,000 to fund a screening programme in partnership with the Graham Fulford Charitable Trust (GFCT) which is focuses on prostate cancer awareness and early detection.
- £100,000 as part of the Gateway scheme in Stratford to assess parking requirements and explore solutions to reduce car travel and alleviate congestion.
- £100,000 to support Cycle Schemes aimed at promoting sustainable transportation.
- £100,000 for an Economic Development Officer to support the Economic Development activity for a period of two years.
- £150,000 for a new splash pad at the Stratford Recreations Ground play area.
- £222,000 additional funding for Environmental Street Scene Improvement promoting public safety and security.
- £250,000 to fund various projects with the aim of enhancing and improving community facilities, services, and overall infrastructure, thereby fostering a stronger and more vibrant local community.
- £250,000 for the Stratford relief road study.





## Council Tax level for Stratford-on-Avon District

*continued*

- £500,000 for various Council construction projects.
- £520,000 for the Climate Change Fund ensuring the Council can continue its commitments to climate change for next year.
- £600,000 to be used to directly target cost-of-living hardship through selected partners.
- £1.2m for an Avon Hydro Scheme to produce a fully renewable energy that could be used by local residents or businesses by utilising the natural drop in the Avon and waterflow to power a turbine.
- £2.5m for affordable and temporary housing to help reduce temporary accommodation costs.

The District Council is also seeking to introduce a second home premium from April 2026 and will be conducting a public consultation during 2025 on this topic.

The council tax mailing will be going out at the end of March and will include a copy of the District Council's council tax booklet for 2025/26.

### Your Council Your Money Your Services



The **booklet** is on the website and as well as the financial information it also includes details of some of the Council Plan achievements for the first year and what this year's budget will support.

There's also information on the refuse and recycling collection service, including how to subscribe to the garden waste service, information on our app and the Christmas and New Year collection changes.

There's information regarding Community Safety, the cost of living support available, help with paying council tax and

information on the digital phone switchover, as well as the dates and locations that have been agreed for the prostate screening events taking place across the District, as supported in the recent budget. Details of the events are also on page 20 of this newsletter.

## Council Tax Help

**Are you,  
or someone in your household,  
living with:**

- a degenerative brain disorder such as Alzheimer's
- a learning disability
- other kinds of dementia
- a severe stroke
- severe or chronic mental illness

**and are entitled to one  
of the following benefits:**

- Employment Support Allowance
- Severe Disablement Allowance
- increased Disability Pension
- Personal Independence Payments (PIP)
- Income Support that includes a disability premium
- the care component of high or middle rate Disability Living Allowance
- Constant Attendance Allowance
- Incapacity Benefit

**then you may be entitled to  
a Council Tax discount**

**and save money  
off your Council Tax bill**

**For more information please contact  
Revenues on**

**01789 260990**

**@revenues@stratford-dc.gov.uk**



## PLANNING NEWS

### Pre-application Advice

As part of the ongoing Development Department visioning work ([www.stratford.gov.uk/devdeptvision](http://www.stratford.gov.uk/devdeptvision)), the District Council is looking at refreshing and enhancing its pre-application advice. The pre-application stage is really important because this is the opportunity to shape, amend and influence proposals by applicants.



Once a planning application is submitted, aside from minor changes, it is difficult to amend an application. In reality, it is often too late to seek changes as the applicant will have spent a significant amount of money on what they believe to be an acceptable proposal and will be reticent to make changes.

Whilst the District Council cannot mandate it, it does encourage applicants to liaise with Town and Parish Councils at the earliest opportunity. As such, Town and Parish Councils are also encouraged to engage with applicants when they reach out. Providing comments on specific aspects of the proposal such as suggestions as to how the scheme could be improved or how concerns could be mitigated or addressed – as opposed to forming a view on the acceptability of the scheme overall – would not fetter your ability as a Town or Parish Council to make formal comments on the application itself. Working with the applicants in this way would help achieve better outcomes for residents.

In terms of District Council pre-application advice, SDC will shortly be introducing a pre-app service for householder applications and then reviewing how this operates to a wider pre-app service to encourage an increased uptake in the service and, ultimately, achieve better planning outcomes.

### South Warwickshire Local Plan

The South Warwickshire Local Plan (SWLP) Preferred Options Consultation has now finished. The consultation ran from 10 January to 7 March 2025 and provided communities the chance to have their say on the latest iteration of the emerging development plan for South Warwickshire to 2050.

As part of the consultation, the SWLP team held more than a dozen in-person and online events to inform and equip the community to respond to the consultation.

The SWLP team wishes to thank the various Town and Parish Councils for their keen interest and numerous inputs to the consultation.

The SWLP team is now busily considering all of the thousands of representations submitted and will publish a Consultation Summary Statement in the next couple of months.

The team will use the representations made along with other evidence to inform the next stage of the plan-making process. This includes refining the number and location of strategic development allocation to the most suitable and sustainable locations.

More information about the SWLP, including an overall timetable of plan preparation process is available at [South Warwickshire Local Plan](#)



Working **Together**





## PLANNING NEWS

### Local Enforcement Plan 2021 Summary

The District Council's approach to planning enforcement is set out in its published Local Enforcement Plan and this information provides a useful summary. Visit [Planning Enforcement | Stratford-on-Avon District Council](#) to view the full Local Enforcement Plan and to view the formal action Stratford-on-Avon District Council (SDC) has taken to date via the Enforcement Register.

The primary purpose of planning enforcement is to remedy planning harm. Enforcement investigations will be focused on the most serious breaches in accordance with the following prioritisation:

Critical	Where irreversible harm is likely to be caused if the Council does not act immediately (e.g. ongoing or recent unauthorised works to listed buildings, TPOs, trees in conservation areas).
Significant	Where an application would not be supported in principle for the development. Where there is significant harm to residential amenity of the area or to highway safety
Desirable	Smaller scale breaches which do not result in significant immediate or irreversible harm.

If formal action is expedient, SDC can issue various notices, including:

Type of Notice	Purpose	Compliance Period	Right of Appeal
Breach of Condition Notice	To secure compliance with a planning condition	Case specific	No
Enforcement Notice	Served where development has been carried out without the relevant planning permission. SDC must give at least 28 days before the notice takes effect.	Case specific	Yes & the appeal will suspend the effect of the notice until decision

Stop Notice	Requires activity to cease. Can only be issued in association with an Enforcement Notice	Case specific	No (but recipient can claim for compensation)
Temporary Stop Notice (TSN)	Requires activity to cease for a temporary period only. Can only be used once for each breach.	56 days	No
Listed Building TSN	Requires works to listed building to cease for a temporary period only.	56 days	No

SDC will initially try to resolve a breach of planning by giving the contravener fair warning and by seeking to resolve the issue by negotiation, and have them remove the unauthorised development, cease the activity voluntarily or comply with the planning requirements. It may be appropriate to invite a retrospective application to regularise a development:

- Applications will generally not be invited for breaches relating to householder development or other minor development where the development is considered acceptable in planning terms
- Where an application is invited, the enforcement case will remain open pending the outcome of the planning application
- Only where negotiations fail to secure a satisfactory solution will formal action be considered

SDC may issue a Planning Contravention Notice (PCN) to obtain more information about the suspected breach as well as details of land ownership, for example. Recipients have 21 days to respond. The various stages of enforcement action, as well as the timescales for compliance with any notice, needs to be borne in mind in understanding the progress of the ongoing planning enforcement investigation.

**If you suspect a breach of planning control,  
please contact [planning.enforcement@stratford-dc.gov.uk](mailto:planning.enforcement@stratford-dc.gov.uk)**

## PLANNING NEWS

### Local Enforcement Plan 2021 Summary *continued*

As can be seen, following SDC's initial assessment it could be 20 weeks before formal action is commenced.

Planning Contravention Notice (3 weeks)

Further Assessment & Invite Application

Application Submission (typically 8 weeks)

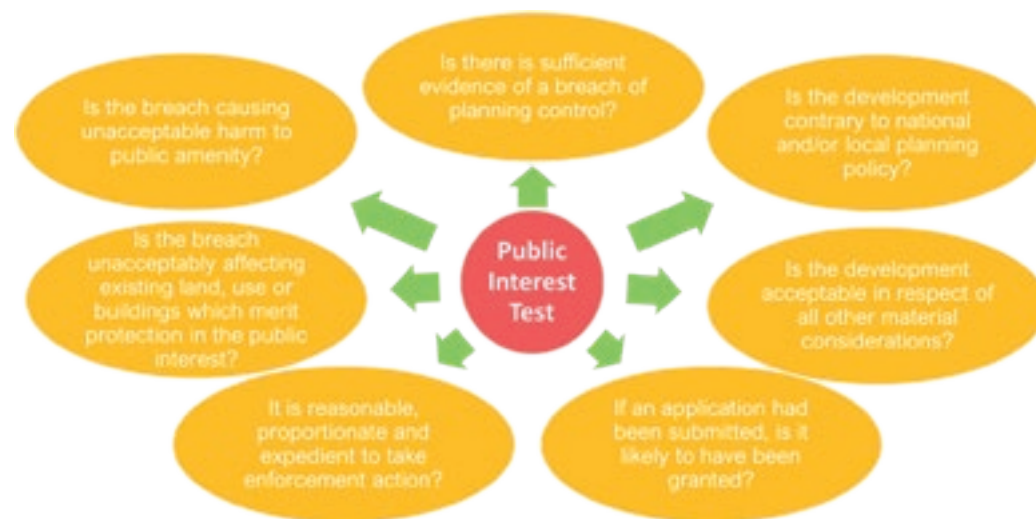
Application Determination (at least 8 weeks)



Applicants also have a right of appeal against a planning application refusal as well as a right of appeal against an enforcement notice. Data from the Planning Inspectorate shows that planning appeals currently average between 19 and 33 weeks and enforcement appeals averaging between 31 and 91 weeks to determine .

Taking enforcement action must be in the public interest. Neither the explanation of how the breach came to occur nor the identity of the person responsible can have any bearing on the approach SDC takes. Enforcement action will not be taken simply because a breach has occurred and SDC will consider the expediency of enforcement action which includes consideration of the following:

Aside from the critical priorities, there is often no need to take urgent enforcement action. It can be more expeditious and successful in the long-term to take comprehensive action once the full extent of any unauthorised development is known. SDC will endeavour to keep complainants informed on the progress of its investigation but may not be able to respond to every individual query, bearing in mind the above timescales and particularly if there is nothing to update on at that time. The investigation will remain open until it is formally closed.



#### Enforcement investigations can be closed for several reasons, such as:

- there is no breach / planning permission is not required / it is permitted development
- the breach is rectified (by negotiation) / planning permission has been granted retrospectively
- the development is lawful (due to time elapsed)
- it is a minor technical breach which does not warrant formal action
- it is not expedient to take action (not causing unacceptable harm)

Data from planning appeals taken from [Appeals: how long they take - GOV.UK](https://www.gov.uk/government/statistics/planning-appeals-how-long-they-take) as at January 2025





## PLANNING NEWS

### Community Infrastructure Levy Updates

#### Investing developer monies into the District

The Community Infrastructure Levy (CIL) is a charge levied by the District Council on new development in the area. CIL monies can be used to fund the provision, improvement, replacement, operation or maintenance of infrastructure to support the development of the area.

Details of CIL spend can be viewed in our annual [Infrastructure Funding Statement](#).

#### New strategy for CIL funds to maximise impact

A new and improved approach to allocating Strategic CIL was agreed by [The Cabinet](#) on 10 March.

Strategic CIL is the portion of total CIL receipts retained by the District Council to spend on infrastructure projects. Under current legislation, 5% of CIL receipts are used by the Council for administrative costs and a portion of receipts are retained by the Town or Parish Council in which the CIL was raised. These arrangements are not affected by the new approach to Strategic CIL spend. The updated approach to Strategic CIL ensures that funding allocations are driven by evidence of development impact. By working closely with infrastructure providers, the District Council aims to achieve greater strategic benefits and transformative results for its communities.

The Council recognises that CIL funding will not be capable of meeting all of the infrastructure needs of the District, even in combination with other developer contributions. The aim is to use CIL as effectively as possible as part of a toolkit of funding sources rather than a cure all.

Strategic spend on CIL since the fund started in 2018 is £4,807,149 on 20 projects. Here's some recently completed projects funded by Strategic CIL



New Pavilion and play area in Fenny Compton



Enhanced car parking facilities at Lighthorne



Replacement lighting in Napton



Youth Shelter, Moreton Morrell



## PLANNING NEWS

### Community Infrastructure Levy Updates *continued*

#### More user-friendly CIL spend reporting for Parish and Town Councils

Town and Parish Council CIL money can be used to support the development of the area by funding the provision, improvement, replacement, operation or maintenance of infrastructure; or anything else that is concerned with addressing the demands that development places on the area.

Town and Parish Councils that have a 'made' (adopted) Neighbourhood Development Plan receive 25% of receipts accruing from development within their parish.

Parishes without a 'made' plan, including those where a plan is in preparation, receive 15%, capped at £100 per dwelling in accordance with CIL Regulations.

Since CIL commenced in 2018, £1,335,474.57 has been allocated to Town and Parish Councils, with £402,939.17 already spent on local infrastructure.

The District Council is required to report annually on Town and Parish Council CIL spend and this is done via an addendum to the Infrastructure Funding statement [Parish Spend Addendum 2023 24 v3.pdf](#)

Town and Parish Councils have a key role in ensuring that appropriate information is provided in good time to assist with this process. To make the reporting process more user friendly, this year the District Council will be providing an online form to provide this spending information. The link to this form will be sent in April 2025 and it will need to be completed by 31st July 2025. We thank you in advance for your co-operation.

Town and Parish Councils must spend the funding within 5 years of receipt, or they may have to return the funding to the District Council to spend within the area.

If you are not sure if a project falls within the remit of the CIL guidelines, or if you are concerned that your CIL spending may be approaching the 5 years deadline, please contact the S106 and CIL compliance officer: [angela.lloyd@stratford-dc.gov.uk](mailto:angela.lloyd@stratford-dc.gov.uk) who will be able to assist.

Here's some recent examples of Town and Parish Council CIL spend.



School signs, Salford Priors



Defibrillator, Salford Priors

## PLANNING NEWS

### Honeybourne rail link study

A Strategic Outline Business Case (SOBC) 2024 Refresh for the Reopening of the Stratford-upon-Avon to Honeybourne Railway Line, funded by a Project Steering Group consisting of a wide range of local authorities, rail companies and voluntary rail bodies was considered by District Council's Cabinet on Monday 10 March [Agenda for The Cabinet on Monday, 10th March, 2025, 10.00 a.m. | Stratford-on-Avon District Council](#)

The 2024 SOBC Refresh recommends that the feasibility of the Honeybourne line be further investigated in the context of a Sub-Regional Transport Strategy/SOBC for the Leamington - Stratford - Moreton-in-Marsh - Pershore / Evesham - Worcester arc. Such a Strategy would be able to respond to the two options emerging from the 2024 SOBC Refresh (Cross-Stratford tram-train; and Stratford - Honeybourne Junctions heavy rail link), as well as the proposed improvements of the North Cotswold Line Taskforce, the Stratford South-West Relief Road, A46 improvements, and local road and public transport improvements.

Honeybourne Rail Link (shown in green) in the context of the regional rail network

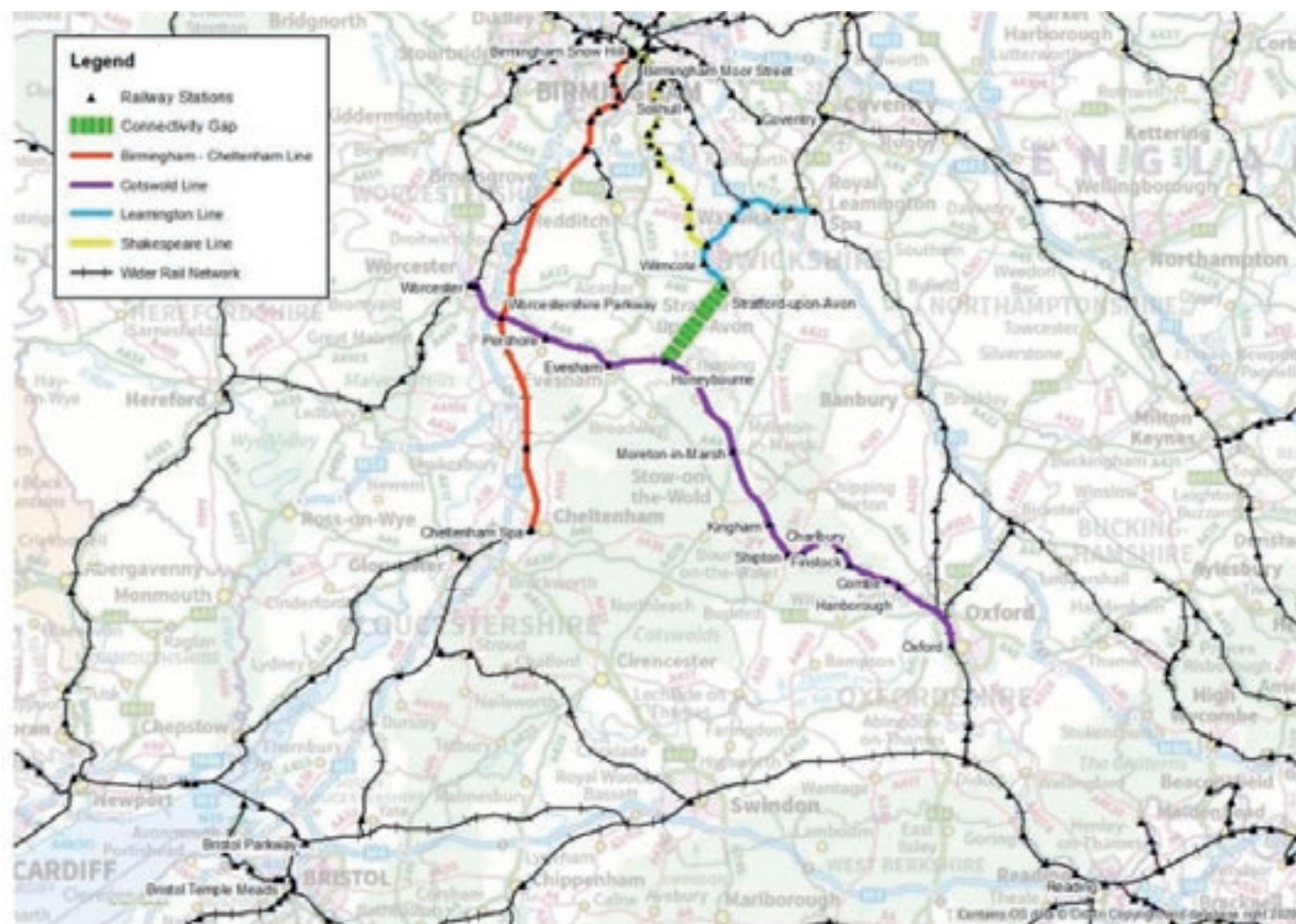


Figure 1.1: Main railway lines in the study area





## PLANNING NEWS

### Canal quarter heat network

The District Council has an established ambition to deliver a district heat network in the Canal Quarter Regeneration Zone in Stratford-upon-Avon.

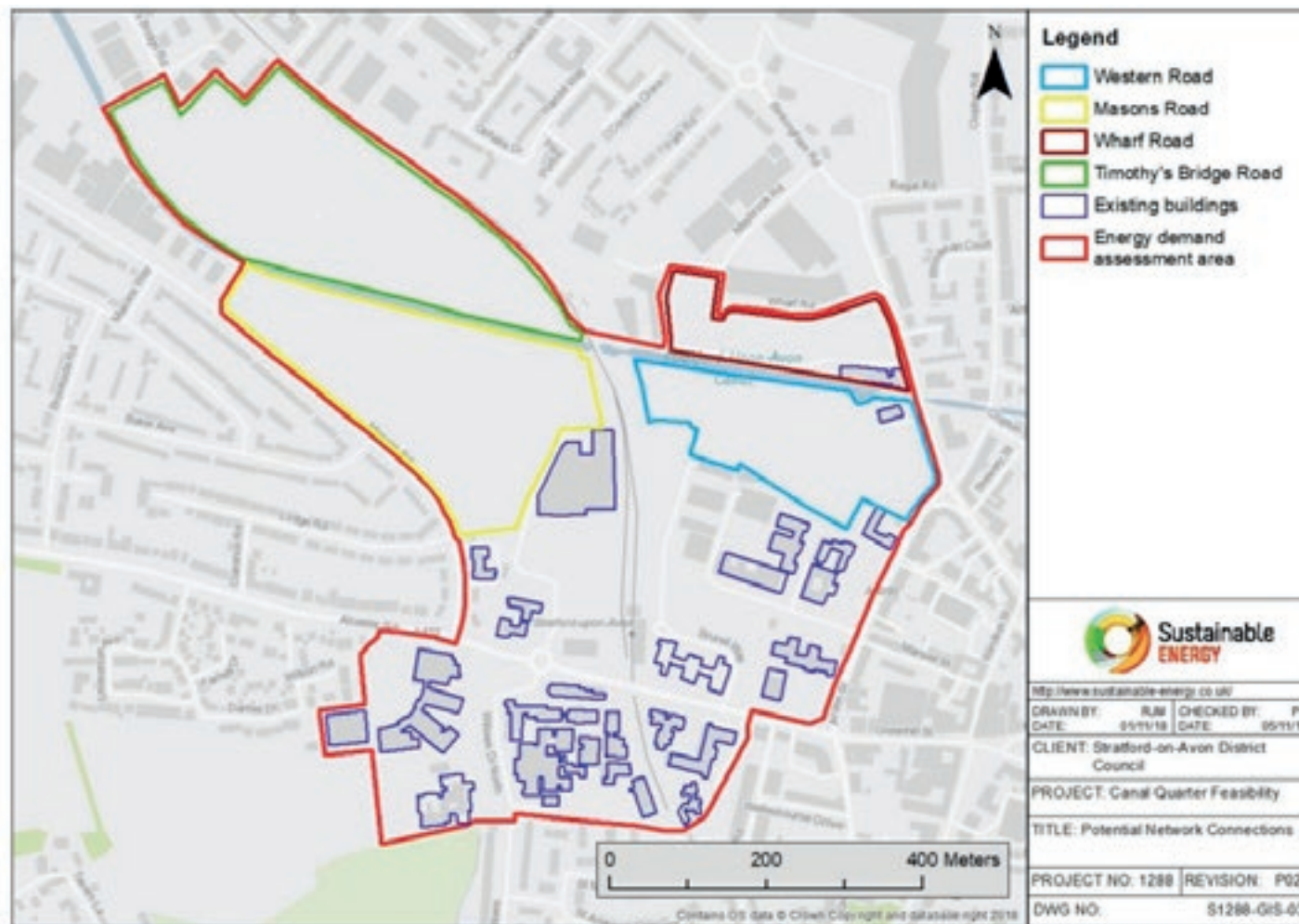
A decentralised heat network can reduce carbon emissions, improve air quality and benefit residents and businesses through cheaper heating and greater security of supply.

An Outline Business Case (OBC) has been prepared and was considered by the District Council's Cabinet on Monday 10 March [Agenda for The Cabinet on Monday, 10th March, 2025, 10.00 a.m. | Stratford-on-Avon District Council](#)

The OBC considers the feasibility and viability of the heat network and summaries various options for delivery models and advises the heat network is broadly viable in the long term with sufficient development up-take.

Cabinet endorsed the report, but any further work has been paused for the next twelve months, in order to identify a future partner. The Minutes from the meeting can be viewed [here](#).

Red-line boundary of the feasibility study area





## Stratford District Council Consultation/Market Research Service for Parishes and Towns

**Are you looking to create a Parish, Town or Community Plan or update one that needs a refresh. This is to remind you that Stratford-on-Avon District Council can offer consultation/market research support for your Plan**

We offer a low-cost "One-Stop Shop" service for all your market research needs.

The questionnaire stage of the Plan process is potentially the most important as results will underpin the development of the Plan. Questionnaires provide everybody with the opportunity to have their say and carefully planned surveys give you the answers you need.

The Performance, Consultation & Insight Unit at Stratford-on-Avon District Council offers its services as a market research agency to other District Councils, Parish and Town Councils. All work undertaken by the Unit is done in line with the Market Research Society's Code of Conduct.

We have extensive experience of survey design from draft questionnaire to the final report. An advantage of using us is our independence from the Parish, Town or Neighbourhood Plan process in your area.

We have successfully helped in the design and consultation process for 76 Town and Parish Councils inside and outside the district since 2009.

### What we do

- Have an initial meeting to discuss your requirements for creating the survey including the correct methodology to use.
- Collaborating with you to create a paper questionnaire or an online version.
- Print the questionnaire using the District Council's Print Unit.
- Provide a comprehensive list of all known addresses in your parish or town.
- Questionnaires are collected or posted back – you could use our postal service where we supply you with FREEPOST envelopes for return of the questionnaires directly to us at the Council offices.
- Data entry of your returned paper questionnaires – it is important that the data processing is via an unconnected and unbiased third party with anonymity assured.
- Produce headline results for each question in a summary report.
- Produce a detailed report which includes full analysis of each question, illustrated with graphs and tables, and the typing of all literal results. This can also include a presentation of the results to the Parish or Town Council if desired.

You do not have to undertake every element with us, as we offer a "Pick and Mix" approach on all the above. Our service is flexible, we give you as much help as you need either for the whole process or just a part.

## Need HELP... with the survey for your Plan?

A personalised consultation service is available, totally independent from the Parish, Town or Neighbourhood Plan process in your area.

### Stratford-on-Avon District Council's Consultation & Insight Unit offers you:

- > Pick and Mix flexible approach
- > Survey design from draft questionnaire to final report
- > Low cost one-stop shop for all your market research needs
- > Data processing via an unconnected, unbiased third party
- > Anonymity assured
- > Work carried out to Market Research Society guidelines

Satisfied clients include Parish Councils from both within and outside Stratford-on-Avon District.



### Feedback received includes:

*"Just wanted to say a big thank you for doing a cracking job on our village survey"*

*"Again thanks to you and your staff for a professional job - and lots of patience!"*

Get professional assistance for your consultation

### Contact Simon Purfield on



01789 260118



[simon.purfield@stratford-dc.gov.uk](mailto:simon.purfield@stratford-dc.gov.uk)



[www.stratford.gov.uk](http://www.stratford.gov.uk)



[www.stratford.gov.uk](http://www.stratford.gov.uk)



[info@stratford-dc.gov.uk](mailto:info@stratford-dc.gov.uk)



[www.facebook.com/StratfordDC](https://www.facebook.com/StratfordDC)



<https://x.com/StratfordDC>



[www.linkedin.com/company/stratford-on-avon-district-council](https://www.linkedin.com/company/stratford-on-avon-district-council)

## Cabinet approve grant funding for affordable housing in Claverdon

In February, Stratford District Council's Cabinet agreed £738,000 to partly fund a local needs community-led housing scheme in Claverdon.

The 10 affordable homes will help meet the needs of residents in Claverdon Parish. Occupancy of the homes will be restricted by a legal agreement to households with a qualifying local connection.

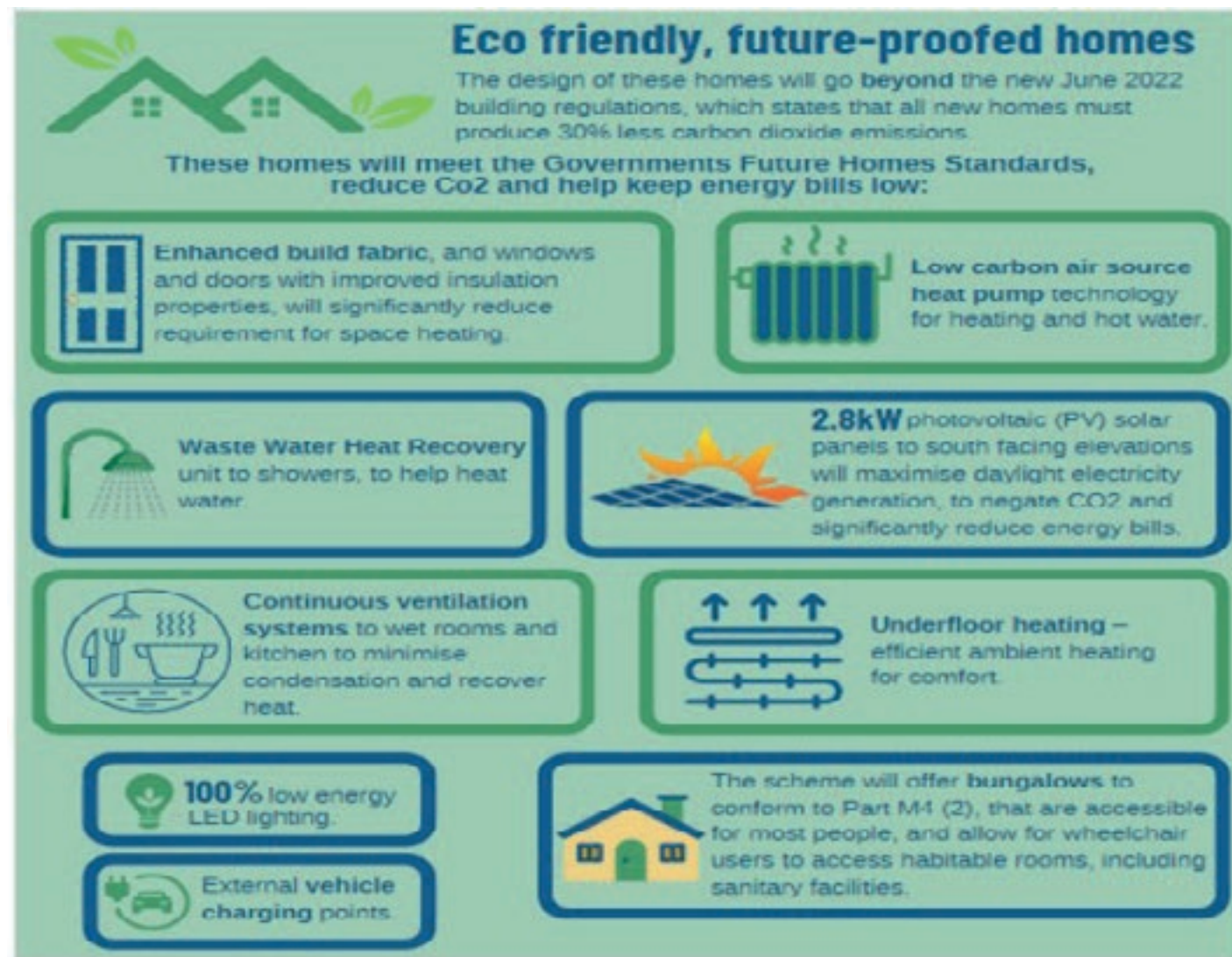
The scheme is being built under the District Council's 'Local Need' initiative (also known as Local Choice), which supports housing schemes that meet an identified local need.

The local community brought the scheme forward and worked with the Rural Housing Enabler to identify the local need for housing and find a suitable site for the new homes.

The homes are being developed by Warwickshire Rural Housing Association (WRHA), working in partnership with Orbit Group. Energy efficient and affordable homes improve people's health and wellbeing. These homes will help reduce carbon dioxide and reduce energy bills for residents.

Similar schemes in other rural communities have been developed within Stratford-on-Avon District.

Interested local communities are encouraged to contact the [Rural Housing Enabler](#) for further information: [housing@wrccrural.org.uk](mailto:housing@wrccrural.org.uk)



## Warwickshire County Council Elections - Thursday 1 May 2025

YOUR VOTE MATTERS

DON'T LOSE IT



On Thursday 1 May 2025 residents in Stratford-on-Avon District will go to the polls to have their say on who represents them at Warwickshire County Council.

Your polling station may have changed for these elections, so please check your poll card or call 01789 260208 or email [elections@stratford-dc.gov.uk](mailto:elections@stratford-dc.gov.uk)

If you need to check the accessibility of your polling station or require any additional assistance, please get in touch with the elections team as soon as possible to discuss this further.

Poll cards are scheduled to be sent out from Tuesday 18 March.

Councillors for Warwickshire are elected every four years. They are responsible for making decisions on key county-wide services such as education, social services, highways, strategic planning, libraries, museums and the arts.

The numbers on the map represent the County Electoral Divisions in the Stratford-on-Avon District named below:

- |                               |                       |
|-------------------------------|-----------------------|
| 1. Alcester                   | 8. Stour and the Vale |
| 2. Arden                      | 9. Stratford North    |
| 3. Bidford & Welford          | 10. Stratford South   |
| 4. Feldon                     | 11. Stratford West    |
| 5. Kineton & Red Horse        | 12. Studley           |
| 6. Shipston                   | 13. Wellesbourne      |
| 7. Southam, Stockton & Napton |                       |

### Voting in the elections

To vote in the elections you must be aged 18 or over on the day of the election, a British, Commonwealth, Irish or Qualifying European citizen and must be registered to vote.

### Electoral Registration

If you are not on the electoral register you will not be able to vote, and this may also prevent you from being able to get credit. If you are not already on the electoral register and wish to vote in the elections this year, you need to apply and be registered by Friday 11 April. You can do this at [www.gov.uk/register-to-vote](http://www.gov.uk/register-to-vote)

### Postal and Proxy Votes

Postal votes and proxy votes, where someone votes on your behalf, are available to any District resident who is on the electoral register.

Postal votes are especially useful for those who are unable to get to a polling station on polling day, due to health reasons or maybe on holiday or working away.

All completed postal vote application forms must be submitted before 5pm on Monday 14 April and applications for proxy votes close at 5pm on Wednesday 23 April. To apply for a postal vote visit: [www.gov.uk/apply-postal-vote](http://www.gov.uk/apply-postal-vote)

To apply for a proxy vote visit: [www.gov.uk/apply-proxy-vote](http://www.gov.uk/apply-proxy-vote)

### Additional information on postal vote handling

There are now restrictions on who can handle postal voting documents. Voters are not allowed to hand in more than five postal ballot packs per poll, in addition to their own. Anyone handing in postal votes to the polling station or at the District Council offices will be required to complete a postal vote return form.

These rules apply to all postal votes not posted through Royal Mail. The best advice is to post postal votes through Royal Mail

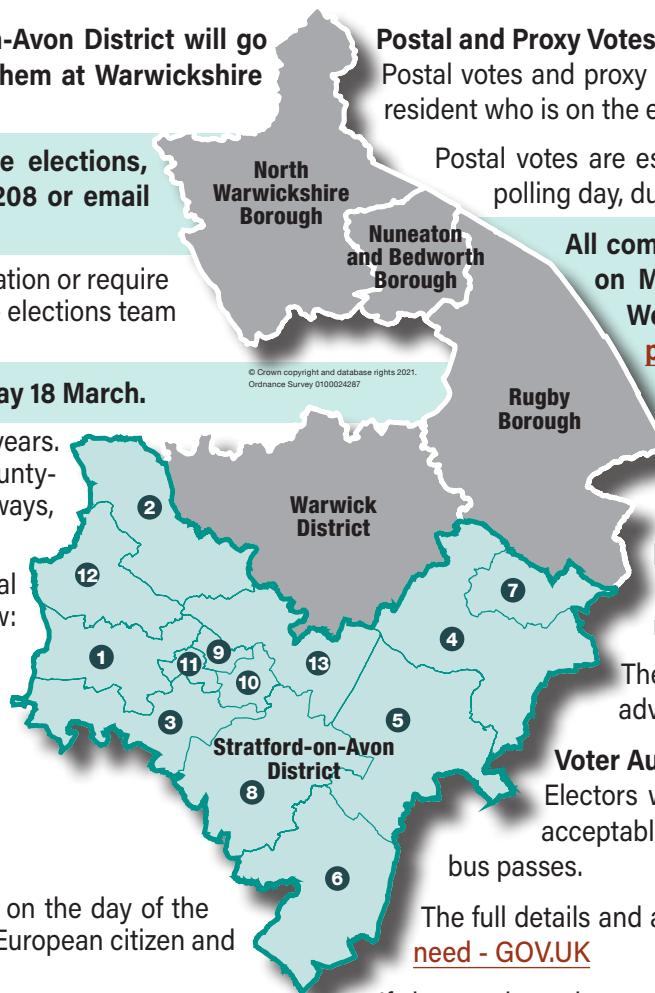
### Voter Authority Certificate

Electors who wish to vote at a polling station on Thursday 1 May, have to show acceptable photo ID, such as a passport, driving licence, blue badge, and certain bus passes.

The full details and a list of acceptable photo ID are available at [How to vote: Photo ID you'll need - GOV.UK](http://www.gov.uk/how-to-vote-photo-id)

If electors do not have suitable photo ID, they can apply for a **free** Voter Authority Certificate online at [Apply for photo ID to vote \(called a 'Voter Authority Certificate'\) - GOV.UK](http://www.gov.uk/apply-for-photo-id-to-vote) or in person at Stratford-on-Avon District Council Offices by 5pm on Wednesday 23 April

For more information please visit: [www.stratford.gov.uk/elections/](http://www.stratford.gov.uk/elections/) or call the District Council's elections office on 01789 260208.





## Stratford Leisure Centre Solar Panels Project

**A major solar panel installation project at Stratford Leisure Centre has been completed, marking a significant step towards improving the sustainability of this key community facility.**

This project is funded by the UK Government through the UK Shared Prosperity Fund. The ambitious project represents a major investment in renewable energy for the District. The initiative, funded by a £280,000 grant from Sport England's Swimming Pool Support Fund, has seen approximately 400 solar panels installed at the centre.

The solar panels are expected to significantly decrease the Leisure Centre's reliance on traditional energy sources, resulting in lower carbon emissions and substantial operational cost savings. The District Council played a pivotal role in securing the funding and driving the project forward, working closely with Everyone Active, who manage the District Council's Leisure Centres, and Leisure Energy Limited, to deliver this important initiative.

*"Standing on the roof and seeing these panels in place is a real highlight," said Councillor Susan Juned, Leader of Stratford-on-Avon District Council. "This project is a fantastic example of how we can work together to create a more sustainable future, reducing carbon emissions and ensuring the long-term viability of community facilities like Stratford Leisure Centre."*

Everyone Active, who manages the District Council's Leisure Centres, is working in partnership with the council on this project. Richard Bell, Everyone Active's Contract Manager said: *"Seeing these panels being installed is a real testament to the hard work and dedication of everyone involved. This project marks a significant step in reducing the centre's carbon footprint and we're proud to be working alongside the District Council as part of our Carbon Reduction Strategy."*

The installation is being carried out by specialist contractor Leisure Energy. Neil Bland, Managing Director of Leisure Energy, said: *"These solar panels represent a tangible investment in the centre's future, improving sustainability and reducing operational costs for years to come. We're proud to have played a part in making this happen."*

Sport England is administering the Swimming Pool Support Fund on behalf of the government. The fund aims to support swimming pools and leisure centres in becoming more sustainable.

Work has also begun on the installation of 168 solar panels at Shipston Leisure Centre.



## COMMUNITY SAFETY NEWS



### New Public Space CCTV cameras launched at Meon Vale

**Stratford-on-Avon District Council has installed three new CCTV cameras within Meon Vale to help prevent and detect crime.**

The CCTV service in Stratford-on-Avon District, is a 24/7 Public Space CCTV monitoring service which assists in the response to crime and anti-social behaviour within the District. The scheme assists police officers and businesses in responding to crime as it happens by providing a live CCTV feed to the police control room and assisting in directing police resources to live incidents. This allows for a quicker response and better understanding of what is happening on the ground for officers before they arrive at an incident.



The CCTV service also provides high quality evidence which can be used in judicial proceedings leading to more convictions. Not all incidents relate to criminal activity, CCTV has played a key role in supporting vulnerable people during welfare and safety-related incidents, as well as supporting better environmental management by monitoring flooding and road traffic collisions.

The new CCTV cameras in Meon Vale area have been funded by local developers. The cameras are being used around Camden Road, Wellington Avenue and playing fields around Bailey Avenue.

Cllr Natalie Gist, Portfolio Holder for Law and Governance, said: *"I'm really pleased that this project has come to fruition led by our Community Safety Team in partnership with the local parish council, St Modwen and many other partners. Crime prevention and reduction is a top priority for residents in Stratford-on-Avon District, and we work hard to deliver this. The increased camera technology at Meon Vale should reassure residents as a very positive step forward".*





## COMMUNITY SAFETY NEWS

### Operation Recall Seeks to Prevent Livestock Worrying

Stratford-on-Avon District Council's Rural Crime Advisors are participating in 'Operation Recall', a national initiative to raise awareness of livestock worrying.

The initiative is being led by Warwickshire Police and supported by partner agencies around the country, such as the National Farmers' Union (NFU), Country Land and Business Association (CLA), National Sheep Association and the RSPCA.

At this time of year, pregnant ewes and lambs are particularly vulnerable, but all new born and young animals are at risk. Reports of livestock worrying sadly increase and this often includes deaths and injury due to attacks by dogs on all kinds of animals, especially sheep.

To help with this initiative, the District Council's team is building on their work around livestock worrying as they continue to raise awareness of the importance of responsible dog ownership across South Warwickshire.

This work involves visiting rural areas where dog attacks on livestock have already been reported, to discuss safe dog walking with members of the public and provide the National Sheep Association's Enjoy your dog walks information leaflet.

Under the Dogs (Protection of Livestock) Act 1953, it is a criminal offence for a dog to actively worry livestock and dog owners risk prosecution. Whilst the majority of dog owners do walk their dogs in a responsible manner, unfortunately there are a small minority whose recklessness puts the welfare of other animals at risk.

Cllr Natalie Gist, Law and Governance Portfolio said: *"Operation Recall is extremely important to our rural communities in Stratford-on-Avon District. Every year livestock worrying has a devastating impact on local farmers along with entirely unnecessary pain and suffering being caused to animals. This can be easily avoided through appropriate control of pets and dogs in particular, and please keep your dog on a lead when near livestock. The District Council's Rural Crime Advisors have worked on Operation Recall for several years and are looking for areas to target and engage the public to prevent harm to livestock so please do contact them for advice"*



If you would like further information or think your local area would benefit from a visit from the District Council's Rural Crime Advisors, Rebecca Jenkins and Alison Packer, or would like 'Operation Recall' leaflets to distribute in your local area please email: [community.safety@stratford-dc.gov.uk](mailto:community.safety@stratford-dc.gov.uk) or complete the [online form here](#).

If you have livestock and would like a 'Dog on Lead' sign, please email: [ruralwatch@warwickshire.police.uk](mailto:ruralwatch@warwickshire.police.uk)





## Overview and Scrutiny Committee update

**The Overview and Scrutiny Committee at Stratford-on-Avon District Council has hit the ground running in 2025.**

In December we asked Town and Parish Councils what they would most like the Overview and Scrutiny Committee to look into, and the biggest response was 'planning'.

January kicked off with an in-depth look into the Planning and Economic Development Portfolio with the Deputy Leader of the Council. Members discussed the work of the Planning department, the development of the South Warwickshire Local Plan and the Council's work to promote and support local business. The Planning service underwent a peer review last year which showed that it was performing well, but the Committee nonetheless intends to closely monitor the improvements being made to the service following the recommendations from the peer review. See what else was discussed at this meeting by reading the [Minutes](#) or watching the [recording](#).

In February, the Committee was joined by Coventry and Warwickshire Integrated Care Board (ICB) to discuss the consultation on community rehabilitation beds across South Warwickshire. This is the second time the ICB has attended a meeting in recent years, and the representatives have offered to attend again this year to discuss options for the Ellen Badger hospital in Shipston-on-Stour.

The February meeting also featured scrutiny of the Council's Budget, and a discussion of the Stratford-upon-Avon Sustainable Transport Strategy. The recording of this meeting is available to view on [YouTube](#).

When available, all minutes, agendas and meeting dates can be viewed on the Council's website, here: [Browse meetings - Overview and Scrutiny Committee | Stratford-on-Avon District Council](#). Join us at one of these meetings in person or watch along on [YouTube](#).

## Stratford-on-Avon District honoured for work helping Ukrainian Medical Charity

**Stratford-on-Avon District Council has been presented with a certificate of merit from the Order of St Pantalaïmon in Ukraine in thanks for the ongoing support given to help Ukrainian Medical Charity with the war in Ukraine.**

On Monday 24 February, at the Full Council meeting, Noel Clements was presented with the certificate by Tania Hébert, Deputy Chair of The Order of St Pantalaïmon in the UK, and also a Ukrainian-born local GP.

Since September 2022, the District Council offices in Stratford-upon-Avon have been used as a donation point to help Ukrainian Medical Charity (previously known as Medical Aid Ukraine). The donations received are sorted and then sent to hospitals most in need in Ukraine.

Donations for Ukrainian Medical Charity can be made at the Council offices from 9am to 5pm weekdays.

Medicines need to be in date; however, packaging can be missing or damaged and bandages can be out of date.



## Recycle more and raise money for local charities

**Stratford-on-Avon District Council is encouraging residents to get more recycling aware in return for a donation to charity.**

The innovative scheme is being made available through Biffa, the Councils' waste and recycling collection contractor, with a donation of 10p being made to the Chair's Charities each time a search is made via the Recycling Info feature on the Council's mobile app.

The District Council will commit up to a £1,000 donation to the current Chair's chosen charities, Citizen's Advice, Air Ambulance Service and Parkinson's UK

To participate, residents can download the app, available on both IOS and Android here: [www.stratford.gov.uk/app](http://www.stratford.gov.uk/app) or and use the Recycling Info feature to search how to recycle a household item or material.

CLlr Jenny Fradgley, Chair of Stratford-on-Avon District Council, said: *"This is a great opportunity to encourage people to recycle right! We all have a part to play when reusing and recycling, join me and use the Recycling Checker and in return 10p will be donated to charities each time a search is made."*

As well as recycling information, Stratford-on-Avon District Council's mobile app offers information on waste collection days, reminders, reporting a missed bin and other Council services.



citizens  
advice

South  
Warwickshire



## SAVE TIME DO IT ONLINE

Did you know you can now claim  
Housing Benefit online. Go to  
**[www.stratford.gov.uk](http://www.stratford.gov.uk)**

If you want to make a payment  
for Council Tax or Business Rates  
use our dedicated payment line  
**0345 600 6956**



## Stratford District Council is promoting Prostate, Cholesterol and Diabetes Health Testing for Men & Women

PSA test aged 40+

Diabetes and Cholesterol

aged 18 and over

2025 testing events



The Graham Fulford Charitable Trust run health testing events that enable men and women to have a number of health tests from a simple blood test, allowing them to, where necessary, seek further advice or action via their GP. The cost to you is £14.00 per test.

You can register for these health tests at these events.



The tests on offer are:  
PSA (Prostate Screening) age over 40.  
Diabetes, cholesterol, age over 18.

### When:

31<sup>st</sup> May - Stratford Leisure Centre

14<sup>th</sup> June - Studley Leisure Centre

12<sup>th</sup> July - Southam Leisure Centre

2<sup>nd</sup> August - The Greig Leisure Centre, Alcester

13<sup>th</sup> September - Stratford Leisure Centre

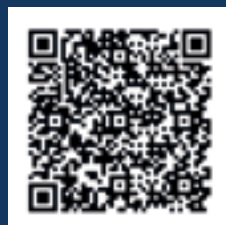
Time: 10:00 – 14:00

Cost: £14.00 per test  
(subsidised by Stratford District Council)

For more information visit: <https://sdc.mypsatestests.org.uk/>

Tel: 01926 419959 - E: [info@myhealthtests.org.uk](mailto:info@myhealthtests.org.uk)

### Book your test now



## STRATFORD ON AVON DISTRICT COMMUNITY TRANSPORT



## COULD YOU BE A VOLUNTEER DRIVER?

Do you have a few hours to spare to help your local community? Why not volunteer as a Community Driver?

- You can offer as much or as little time as you want
- You will be helping people get to essential appointments
- You will receive great training
- You will be reimbursed 45p per mile driven
- You will make a real difference in your community.
- You will have the support of an award winning charity.



Tel: 01789 777990

Email: [volunteers@vasa.org.uk](mailto:volunteers@vasa.org.uk)





## Stratford District Council meetings

District Council meetings can be viewed at:

- [Council Meeting Webcasts | Stratford-on-Avon District Council](#)
- [Stratford-on-Avon District Council YouTube Channel](#)

To see the full calendar of District Council meetings, please go to: [Monthly meetings calendar - April 2025 | Stratford-on-Avon District Council](#)

Date	Time	Meeting
Wednesday 2 April	6.00pm	Planning
Friday 4 April	10.00am	Overview and Scrutiny Committee
Monday 7 April	10.00am	The Cabinet
Wednesday 9 October	6.00pm	Planning
Monday 14 April	2.00pm	Council
Wednesday 16 April	6.00pm	Planning
Wednesday 23 April	6.00pm	Planning
Tuesday 6 May	4.00pm	Climate Change Panel
Wednesday 7 May	6.00pm	Planning
Wednesday 14 May	11.00am	Annual Council
Wednesday 21 May	6.00pm	Planning
Wednesday 28 May	10.00am	Overview and Scrutiny Committee
Monday 2 June	10.00am	The Cabinet
Wednesday 4 June	6.00pm	Planning
Wednesday 18 June	6.00pm	Planning




**Want to receive regular news and updates from your District Council directly to your email inbox?**

**Then sign up now to The Online View – Stratford District Newsletter:** <https://www.stratford.gov.uk/communications/email-newsletter.cfm>


Residents from Stratford-on-Avon District who remember Victory in Europe Day (VE Day) on 8 May 1945 are being invited to share their memories towards an important community history project.

Discover more <https://ow.ly/UuyH50V9u9G>



**Do you have local memories of VE Day?**

**To celebrate 80 years of Victory in Europe, we're collecting stories from the county. Share yours with us by scanning this code and completing the form.**



SCAN ME

Not confident with QR codes?  
Ask a member of staff for a paper copy.

